

ARP 49°09'05"N  
016°41'38"E

TUŘANY TWR 119,600  
TUŘANY GROUND 125,425  
121,500

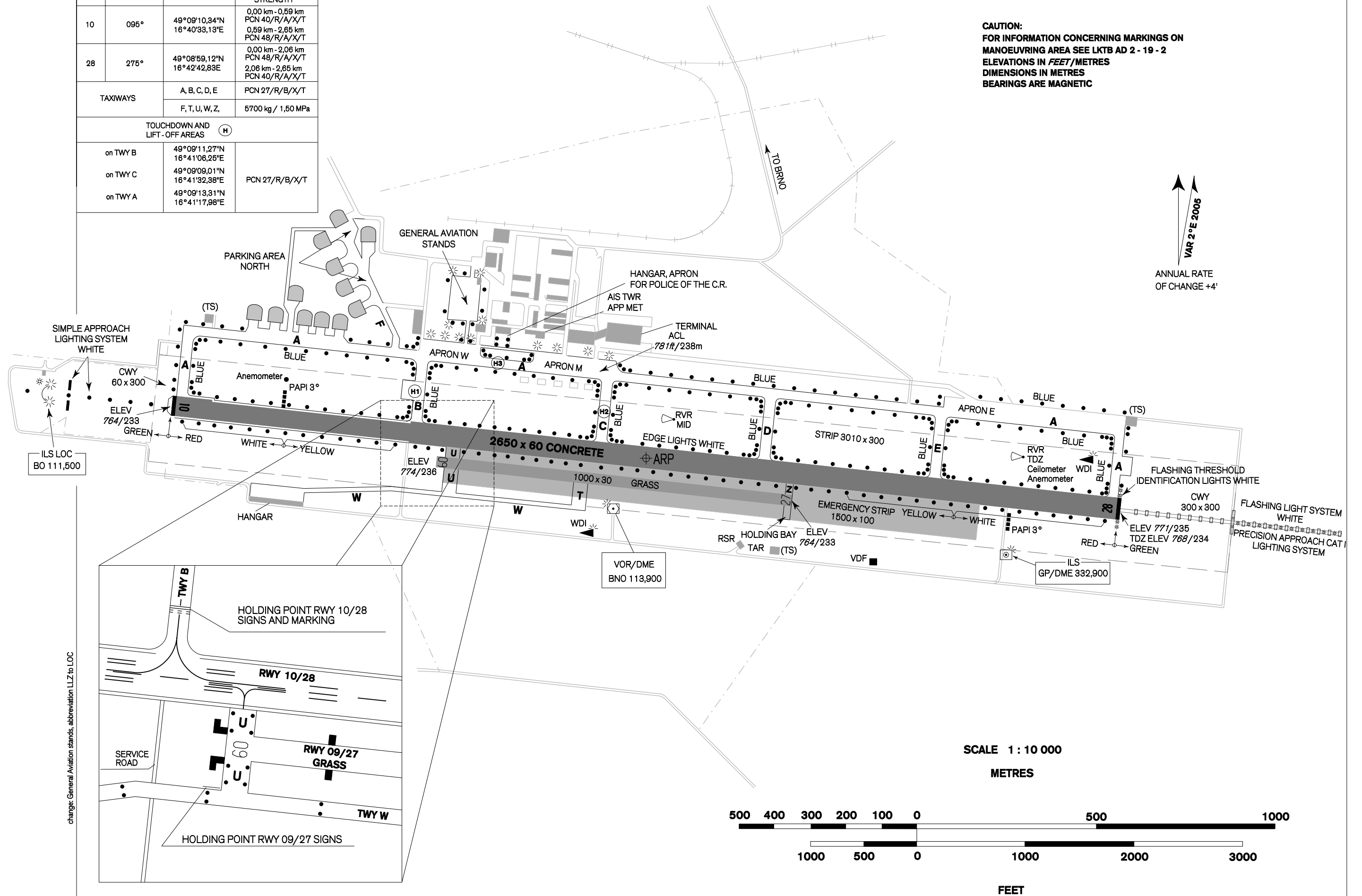
ELEV  
778 ft / 237 m

AERODROME CHART - ICAO BRNO/Tuřany

| RWY                              | DIRECTION                      | THR                            | BEARING STRENGTH   |
|----------------------------------|--------------------------------|--------------------------------|--|
| 10                               | 095°                           | 49°09'10,34"N<br>16°40'33,13"E | 0,00 km - 0,59 km<br>PCN 40/R/A/X/T<br>0,59 km - 2,65 km<br>PCN 48/R/A/X/T |
| 28                               | 275°                           | 49°08'59,12"N<br>16°42'42,83"E | 0,00 km - 2,06 km<br>PCN 48/R/A/X/T<br>2,06 km - 2,65 km<br>PCN 40/R/A/X/T |
| TAXIWAYS                         |                                | A, B, C, D, E<br>F, T, U, W, Z | PCN 27/R/B/X/T<br>5700 kg / 1,50 MPa                                       |
| TOUCHDOWN AND LIFT-OFF AREAS (H) |                                |                                |  |
| on TWY B                         | 49°09'11,27"N<br>16°41'06,26"E |                                | PCN 27/R/B/X/T   |
| on TWY C                         | 49°09'09,01"N<br>16°41'32,38"E |                                |  |
| on TWY A                         | 49°09'13,31"N<br>16°41'17,98"E |                                |  |

CAUTION:  
FOR INFORMATION CONCERNING MARKINGS ON  
MANOEUVRING AREA SEE LKTB AD 2 - 19 - 2  
ELEVATIONS IN FEET/METRES  
DIMENSIONS IN METRES  
BEARINGS ARE MAGNETIC

VAR 2° E 2005  
ANNUAL RATE OF CHANGE +4'

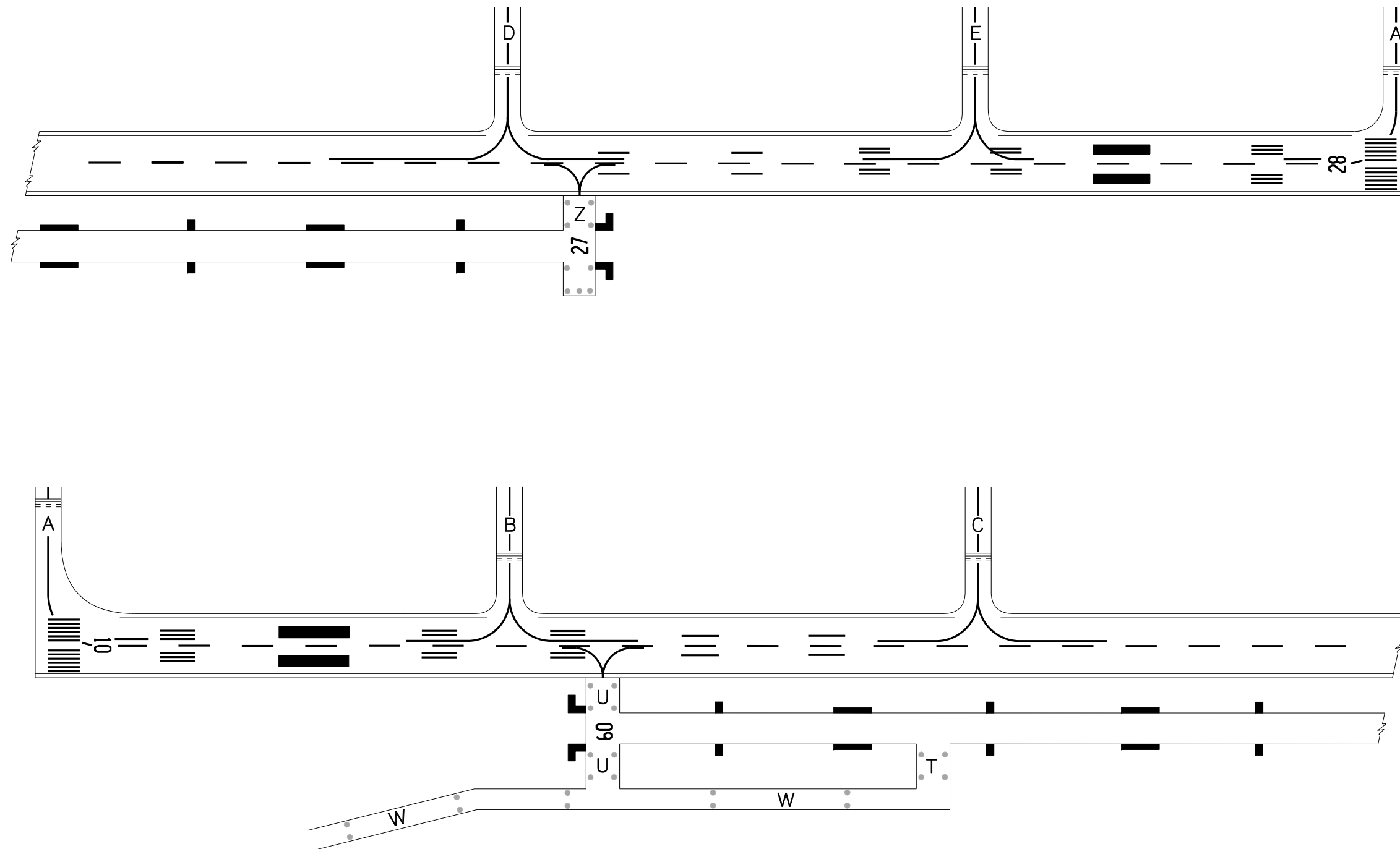


change: General Aviation stands, abbreviation LLZ to LOC



# AERODROME CHART - ICAO - MARKINGS ON MANOEUVRING AREA

## BRNO / Tuřany



change: touchdown zone of RWY 10

